

# CLASSIC TILE INC.

CORPORATE HEADQUARTERS: 325 PINE STREET \* ELIZABETH, NJ 07206

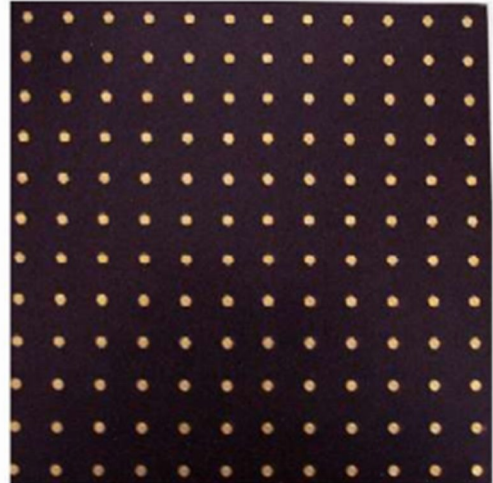
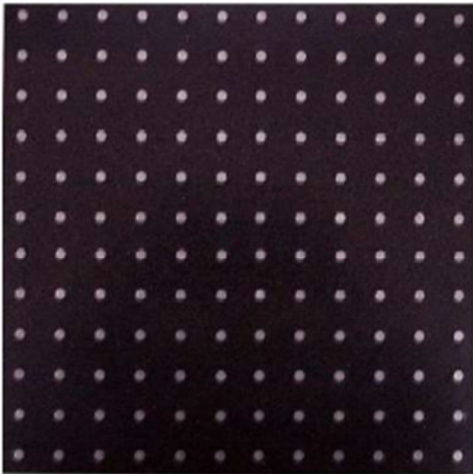
(800) 352-2527 FAX: (908) 289-6266 TEL: (908) 289-8400

WEB SITE: WWW.CLASSICTILE.COM E-MAIL: CLASSICTILE@OPTONLINE.NET

**DUNS: 087286472**

**CAGE CODE: 3K4R1**

## **STAINLESS STEEL & BRASS STUDDED RUBBER TILE**



### **THE ULTIMATE FLOORING SYSTEM FOR WEAR AND DURABILITY**

**SPECIFICALLY DESIGNED FOR ELEVATORS  
ENTRANCE WAYS**

**EXTRA HEAVY WEIGHT BEARING AREAS**

**12" x 12" x 1/8" GAUGE RUBBER TILE REINFORCED WITH  
STAINLESS STEEL OR BRASS STUDS**

# PRODUCT SPECIFICATIONS:

EACH TILE IS 12" X 12" X 1/8" SOLID RUBBER

TILES CONTAIN 144 STUDS, ONE EVERY SQUARE INCH

STUDS ARE INSERTED THROUGH THE BACK OF THE TILE SO THAT THE FACE IS A

SMOOTH SURFACE COMBINATION OF METAL STUDS AND TILE

## **Hammered (SE)**

Gauge: 1/8" (3.175 mm)

Design: Random Dimples across Surface

Design Depth: 0.010" - 0.015"

Size: 12" x 12" (30.48 cm x 30.48 cm)

Weight per Tile 1.40 Lbs.

## **Smooth (SM)**

Gauge: 1/8" (3.175 mm)

Design: Smooth Surface

Size: 12" x 12" (30.48 cm x 30.48 cm)

Weight Per Tile 1.40 Lbs.

## TECHNICAL DATA, TESTING

### **PRODUCT CLASSIFICATION**

ASTM F 1344, Rubber Floor Tile - Class I, Type A Solid Color

2

### **FIRE TESTING INFORMATION**

ASTM E 648 (NFPA 253), Critical Radiant Flux - Class 1, > .45 W/cm

ASTM E 662 (NFPA 258), Smoke Generation - Passes, < 450

### **GENERAL PERFORMANCE INFORMATION**

ASTM D2047, Coefficient of Friction (Slip Resistance) - > .6

ASTM D2240, Hardness - > 85

ASTM D3389, Abrasion – Passes <1gm loss

ASTM F925, Resistance to Chemicals – Passes

ASTM F970, Static Load Limit - 250 psi, Passes Max Indentation of 0.003" @ 1,500 psi

### **PRODUCT BENEFITS & LIMITATIONS**

- ❑ Can be installed over **radiant heat**, operational temperature must not exceed 85° to prevent damage to flooring
- ❑ Not to be used in **Commercial Kitchens** or other areas subjected to animal, vegetable or petroleum based oils and solvents.
- ❑ Not to be used in areas subjected to **sharp spikes, cleats, sharp wheels, stiletto heels** or other objects that could damage the flooring.
- ❑ Not to be used in direct contact with heat sources or in **outdoor** applications.

## INSTALLATION:

- FLOOR MUST BE CLEAN AND DRY. REMOVE ANY OLD FLOOR COVERING AND BE SURE THE SUB FLOOR IS FREE OF ALL DIRT AND RESIDUE
- INSTALL QUALITY WHITE SHIELD FELT OR SATURATED PAPER WITH MULTI PURPOSE ADHESIVE
- ALLOW TO DRY THOROUGHLY
- USE A TWO PART EPOXY WITH A 1/8" X 1/8" SQUARE NOTCH TROWEL. SPREAD ADHESIVE AND INSTALL TILES WITH SMOOTH SIDE UP. ROLL WITH HEAVY FLOOR TILE ROLLER
- FOR EASE OF CUTTING AT THE WALL, REMOVE STUDS FROM THE BACK BY PULLING OUT LIKE A THUMB TACK
- PUNCH OUT MATERIAL FROM HOLES AVAILABLE UPON REQUEST

## MAINTENANCE:

SWEEP AND WASH FLOOR WITH A NEUTRAL PH CLEANER OR MILD DETERGENT AND WATER SOLUTION. FLOOR MUST BE DRIED WITH A SOFT CLOTH. ***NEVER LEAVE FLOOR WET***

**FOR PRODUCT SAMPLES PLEASE CONTACT CLASSIC TILE CUSTOMER**

**SERVICE 908- 289- 8400**